



HOLY FAMILY
CATHOLIC COMMUNITY

SAFETY PROTOCOLS FOR SPIRIT CAMP 2021

Summer activities are subject to change depending upon the evolution of the pandemic. As such, it is possible that some, or all activities may not be able to proceed, or that additional health and safety protocols may be required by the time Spirit Camp begins.

Families of campers and volunteers under 18 years of age will be asked to sign an agreement indicating their willingness to understand and follow COVID-19 protocols during summer activities, and to notify the parish of any/all known or suspect COVID-19 cases.

GENERAL GUIDANCE

HEALTH AND SAFETY PROTOCOLS - [Click Here](#) for the complete outline of the Archdiocesan Health and Safety Protocols

We will be following all the health and safety protocols outlined in the **Operating Framework** provided by the Archdiocese of Chicago. This includes, but is not limited to, the following:

- **All campers and volunteers must wear masks at all times during Spirit Camp.**

→ Families must provide masks for their child/children.



Children are not yet vaccinated. The Archdiocese of Chicago continues to require that all participants in Parish events for children, wear masks, regardless of vaccination status, whether indoor or outdoor.

- **Participants must go through a daily “MATH” Wellness Check**, which will be conducted by trained volunteers. Wellness Checks include a **Mask Check**, **Asking About Symptoms**, **Temperature Check**, and **Hand Washing or Sanitizing**.
- **Participants must maintain the appropriate social distancing.**
 - A distance of at least three (3) feet is required of campers/volunteers within the same grade level cohort. Cohorts must maintain a distance of 6-10 feet from other cohorts.
- **Campers are asked to bring their own water bottles for use during Camp.**
 - Please make sure your child’s name is on their water bottle.
 - Children will be able to refill their water bottle if needed
- **We will not be offering snacks at Camp**
- **A pre-registration and attendance record-keeping process will be in place** to support contact tracing efforts, which are vital to reducing the spread of COVID-19.
- **Parents of both campers and volunteers younger than 15, are asked to provide a cell phone number where they can be reached during Camp.** If we need to contact a parent for any reason we will text them.

THE COHORT MODEL

Spirit Camp will operate under a “**Cohort**” model

- Spirit Camp will have six (6) grade level cohorts of thirty (30) campers each.

- Each cohort will be divided into five (5) Crews consisting of the six (6) campers, the Crew Leader and Crew Leader's Assistant.

These groupings are as static as possible by having the same group of children stay with the same volunteers during Camp. This strategy maintains a safe environment by eliminating the interaction between cohorts, which allows single cohorts to be quarantined in the event of infection, rather than closing the entire Camp.

INFECTION PROTOCOL – what to do if someone gets sick

To see the full Chicago Archdiocesan Infection protocol [here](#)

Prevention

- Temperature checks of all campers and volunteers must be taken on arrival at camp each morning. Any camper or volunteer who has a temperature above 100.4 degrees Fahrenheit will be sent home and encouraged to contact a doctor.
- Parents are asked to be mindful of COVID-19 [symptoms](#).

Response to covid-19 symptoms

- If a camper or volunteer is exhibiting a fever or one of the COVID-19 symptoms, they will be immediately separated from others in the Isolation Room, staffed by a Registered Nurse. Parents will be immediately contacted so the camper/volunteer may be taken home.
- The camper/volunteer sent home should see a doctor to assess symptoms and/or administer a COVID-19 test. Parents are encouraged to read the [CDC guidance for caring for oneself and others](#)
- Campers/volunteers that test positive for COVID-19 are asked to remain at home and contact phanrahan@holyfamilyparish.org.
- Dr. Peg will then reach out to the family to file a **COVID-19 Infection Form** (this will be done over the phone).

Quarantine Protocol

Any individual (camper or volunteer) who experiences COVID-like symptom(s):

- Will be sent home immediately
- Siblings of the camper experiencing symptoms will also be sent home.
- All campers and volunteers in the same household may return to camp
 - If the symptoms dissipate within 24 hours and
 - They have not been exposed to any individual infected with COVID-19
- If symptoms do not dissipate within 24 hours, the individual should be:
 - referred to their healthcare provider for COVID-19 testing (it is important to note the type of test administered).
 - quarantined with the entire family while awaiting the test result
- The individual may return to camp if **both** of the following criteria are met:
 - Documentation of a negative test for COVID-19 is presented
 - 24-hours with no fever (without fever-reducing medication)
- If symptoms persist, the individual should obtain an alternate diagnosis from a medical provider in addition to the negative COVID-19 diagnosis (e.g., strep throat diagnosis and negative COVID-19 result).
- If an alternative diagnosis of a communicable illness is provided, the individual should stay home until symptoms have receded per doctor's instruction.

Quarantined, but not symptomatic, due to COVID-19 exposure

- If exposed to COVID-19, individual campers and volunteers may not return to camp, since they are required to be quarantined for 14 days. Dr. Peg Hanrahan will then reach out to the family to file a **COVID-19 Infection Form** (this will be done over the phone).

Travel Restrictions - Campers/volunteers are discouraged from traveling out of the state or country for the 14 days prior to Spirit Camp.

- Students who travel internationally should remain at home for 14 days.
- Students traveling domestically (i.e., any and all travel outside the state of Illinois) must remain at home for 10 days. Quarantine is required regardless of whether or not there is a negative COVID-19 test result, and no matter how much time is spent in another state. Quarantine starts the day after returning home.

Volunteer Training

- All adult and teen volunteers 18 or over must be **Virtus compliant**
- All volunteers must attend a training session that informs them of the Safety protocols and camp rules
- All volunteers will sign a contract stating that they will follow the safety protocols.
- If a volunteer fails to follow the safety protocols or allows campers in their supervision to ignore the safety protocols, he/she will be asked to leave camp.

Cleaning and disinfecting

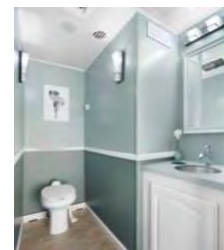
- All stations and Crew Leaders will have access to hand sanitizer that contains at least 60 percent alcohol.
- Spray bottles of cleaning disinfectant will be readily available in each station and shared space for use throughout the day. Common surfaces in shared spaces will be cleaned multiple times per day.
- Campers and volunteers will be asked to sanitize their hands at the beginning and end of each activity.
- Disinfectant wipes and cleaning disinfectant be readily available for use throughout the camp.
- The Craft and Imagination Stations will be cleaned after each cohort.
- The Games Station will wipe down all the equipment used after each cohort.
- Campers will not be sharing common craft supplies. Each camper will receive their own materials for the week (i.e. markers, crayons. Glue sticks, pencil...). Campers are expected to be responsible for these materials during the week.

Outdoor restrooms will be available during Spirit Camp.

We have rented a trailer containing two restrooms for the week (see photos on the right). These restrooms provide flush toilets, sinks with running water, electric lights and heating and air-conditioning (if needed). Campers and volunteers should realize that restroom use will be limited (2 restrooms for 300 people). Campers and volunteers should make sure they use the restroom before coming to Camp.



- No 'bathroom breaks' are built into the Camp schedule.
- **Campers must ask permission to use the restroom.** Campers will be escorted to the restroom trailer by their Crew Aid or another volunteer. **This is done in order to avoid cross contamination between cohorts.**
- Only one person will be allowed to use the restroom at any given time. The restroom will be wiped down with disinfectant wipes after each use.
- Volunteers will be assigned to monitor the restrooms and make sure the proper social distance is maintained by those waiting to use the restroom.
- The restrooms will be wiped down with disinfectant wipes after each use.



Note to Parents: If you have a camper who has a health condition that necessitates frequent use of restroom facilities, please let their CREW leaders know.

Outdoor Safety – Parents, please be advised, that orange cones, rope and plastic crowd barriers (see pictures below) will delineate the camp boundaries. The parking lot facing the main entrance of the campus, will be in use during camp for other parish events/business. Our parish grounds give access to three streets used for daily traffic (Haman, Thornbark, and Palatine Rd.) We also have a retention pond on our property. **Please make sure your camper understands the following:**



- Once dropped off, campers must stay within the designated camp boundaries
- The Gaga Pit, playground area, baseball field and the buildings on campus are off limits to campers
- Campers are asked to stay with their assigned CREW **at all times**.
 - Each CREW will be assigned a **'home base'** and designated spaces in the various stations.
 - CREW Leaders have been asked never to leave their Crew unattended.
 - PK, and K crews will use a **walking rope**, to help them stay together as they move from station to station.
 - CREW aides and other volunteers will escort campers who may need to leave their crew (i.e. Bathrooms, first aid, the Camp Nurse...)
- Campers should not be wandering around camp on their own, or visiting other crews.
- Campers should not be on the main stage, unless asked to come on stage.
- If a camper will not stay with their CREW, runs away or hides from their CREW leader, parents will be asked to come and get their camper and take them home.



All adults who will be dropping off or picking up campers, please be alert and observant while driving in the parking lot.

Please follow the instructions of the volunteers directing traffic

Drop Off Procedure

1. Enter Holy Family from Palatine Rd.
2. Take an immediate left into the north parking lot
3. Follow the instructions of the volunteer traffic coordinators into one of the four lines for the Wellness Check
4. Campers/volunteers who pass the Wellness Check will exit the car and be escorted to their place by a volunteer. **Campers must wait for the volunteer before moving away from their car.**
5. Drivers in lanes 1 & 2 will exit onto Haman Rd.; Drivers in lanes 3 & 4 will exit onto Thornbark

Parent Note: If your camper is having a difficult time leaving you, feel free to park in the main west parking lot, to calm your child. Unfortunately, because of cross contamination issues we are not able to have your little one sit with an older sibling.

Pick-up Procedure

1. Enter Holy Family from Thornbark Road
2. Park in the back of the main west parking lot
3. Get out of your car and walk to the Parent Pick-up area, which will be clearly marked.
4. We ask that you wear a mask for pick-up in compliance with Archdiocesan Policy
5. Tell the Volunteers in that area the names and grades of the children you are picking up.
6. Volunteers will locate your campers and escort them back to you.
7. You will then take your campers to your car. Please be mindful of moving vehicles in the parking lot.